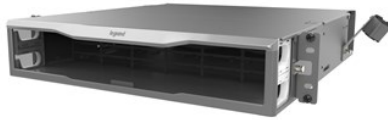


---

## 2U INFINIUM HIGH DENSITY (HD) FIBER ENCLOSURE - M8 DRAWER FACE

INFC02U-M8 | [Legrand](#)



---

### FEATURES & BENEFITS

The Infinium HD Enclosure is the perfect solution for fiber networks in data centers and building networks. The high-density footprint accommodates up to 96 fibers in a rack space of 1U. This enclosure has many innovative features designed with installers, contractors, and network professionals in mind, providing a simplified process when installing or working within the enclosure.

This enclosure features an M8 (Base-8) drawer face, accepting Legrand's M8 cassettes and HD8FP adapter panels. The drawer face can be removed and replaced with a M4 (Base-12) drawer face for migrations after being installed into the rack.

- **Single-Touch Access:** Features a 'push-to-open' latching mechanism, enabling a single touch to open or close the door
- **Better Accessibility:** Enclosure door is attached to the sliding door face, providing clearance for equipment mounted below when tray is pulled out. A tray locking mechanism ensures the tray stays in place when patching or dressing the fiber
- **Removable Top Covers:** The 60/40 split-top design features tool-less removal for easy access from above
- **Increased Visibility:** A white tray in the front and integrated LED lighting in the rear, along with the split-top cover, provide maximum visibility when working inside the enclosure.
- **Easier Labeling:** The label card is incorporated into the front tray, slides forward, and locks in place for simplified port labeling. Templates designed for both Brother and Dymo printers are available for download.
- **Intuitive Fiber Slack Management:** Rear cable-management arms with pivot disks rotate outward from the back of the enclosure to help manage fiber slack.
- **Improved Side Cable Management:** Side cable attachment brackets feature tool-less adjustment based on where fiber is entering the rear of the enclosure, and can be upward or downward-facing. Integrated grommets help ensure fiber is protected and secured.
- **Greater Scalability:** The included drawer faces are removable within the enclosure, allowing for migration from our M4 (Base-12) to our M8 (Base-8) drawer faces or vice-versa.
- **Simplified Installation:** The rack-mount brackets feature an open-ended ear design to allow the enclosure to rest on pre-mounted screws in the rack for a one-person installation. The ears also feature adjustment for flush or forward-mounting positions to allow for egress into vertical managers
- **Data Center Compliant Packaging:** The enclosure comes packaged in a "bubble bag" that is data center compliant, features an integrated handle and is fully recyclable
- **Beautiful Aesthetics:** This enclosure features sleek styling that matches the design of Legrand racks, cabinets and other data center products and solutions, and a magnesium color scheme that blends in all data center environments

---

### SPECIFICATIONS

#### GENERAL INFO

Color: Magnesium  
Installation Destination: Rack Mount  
Product Series: Infinium  
Type: High Density Fiber Enclosure

## ASSEMBLY/INSTALLATION INFORMATION

Mounting Hardware Included: Yes

## LISTING AGENCIES/THIRD PARTY CERTIFICATIONS

RoHS: Yes

## DIMENSIONS

Rack Units: 2

## TECHNICAL INFORMATION

Capacity: High Density

Equipment Type: Fiber Cabinets

## BUY AMERICAN ACT COMPLIANCE

Country Of Origin: UNITED STATES OF AMERICA

