

LISA side access tray units



Characteristics

- Integration of MTP® transition fiber trays
- 19" rear-mounting for improved access to front
- Horizontal fiber tray mounting maximises available height in rack
- Universal fixing plate for 2 conduits (splicing) or 3 MTP® adaptors
- Integral service loop for patch cords
- Horizontal and vertical patch cord guides
- Integrated patch cord mandrels for bend-radius protection
- Patch cord retaining ring ensures safe strain-relief of patch cords exiting the unit

Standard tray units for pigtail splicing and MTP®-LC transition

The LISA standard tray unit is a high-density chassis which manages pigtail splicing or MTP®-LC transition fiber trays inside the centralised cross-connect rack. Incoming backbone cables enter the tray unit from the left hand side and jumper cables are connected on the right hand side of the tray unit.

Due to 19" fixings at the rear of the tray unit, full access can be enjoyed to all incoming and outgoing fibers and the integrated service loops allow the fiber tray to be inserted and retracted quickly and easily.

Standard tray units are supplied in 7U units with a density of 15 fiber trays in total. Fully loaded 47U high CDR racks will accommodate a maximum of 6 7U tray units or 90 fiber trays.

Technical data

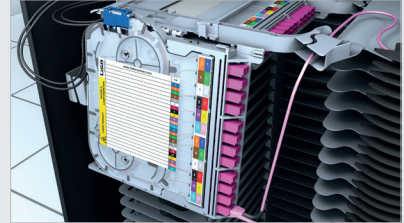
Attribute	Value
Dimension (W × H × D)	7U: 498 × 264 × 310.2 mm
Capacity	15 fiber trays per unit
Compatibility	CDR 900/1200 mm
Material and colour	sub-rack body: aluminum/steel - powder coated (available on request in grey) mandrels at the front: ABS, black mandrels on the side: HDPE/PC, blue
Weight	7U: 9.1 kg
Ingress protection degree (EN60529)	IP20
Resistance to impact (EN62262)	IK03
Bending radius	35 mm
Temperature resistance (long term)	-40 to +70 °C (-40 to +158 °F)

Key features tray units



100 % accessibility from front side

The LISA tray unit allows incoming cables and outgoing jumpers to be fully installed and serviced from the front side without the need to access the rear of the cabinet. Integrated slack storage areas allow fiber trays to be slid in and out of the tray unit in just a few seconds without disrupting pre-installed fibers.



Mix and match in the same rack

Splicing fiber trays and MTP®-LC transition trays can be mixed together in the same centralised cross-connect rack due to the universal fixing plate on the side of the tray unit. This is a great feature for operators who have pre-installed spliced fibers but want to move to a more flexible MTP® backbone. Multimode and singlemode trays can also be mixed and matched giving even more flexibility and scalability.



Ordering information

Description	Item no.
Tray unit black for splicing and MTP®-LC transition 7U tray unit for connecting up to 15 fiber trays	85013562



Description	Item no.
Tray unit black for MTP® and LC patching 7U sub-rack for patch to patch solution, accommodates up to 15 patching trays	85017846