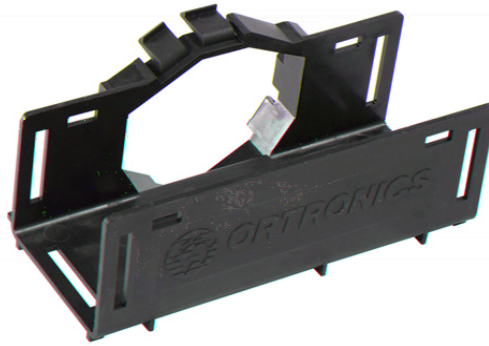


MM20 Universal Cable Troughs, 2" x 2" x 5.25" trough with hex mounting for MM20 channel racks, package of 6

OR-MM20UCT2X2-X



Universal cable troughs snap into the hex pattern on the Mighty Mo 20 channel racks and are used to create a front to rear or vertical trough on the inside or outside of the channel. They can be mounted in a row to create a continuous trough or rotated at 30 degree increments to support cables through directional changes. Up to 3 HiLOC harnesses can be toollessly mounted into each trough. The 2" x 2" size is equipped with slots to allow it to be joined to Mighty Mo Fiber Raceway.

Note: Replace the "X" tail code with "B" for black or "W" for white.

features & benefits

- **Snaps into the hex pattern on MM20 channel racks:** Creates a front to rear pathway for cables between racks.
- **Hex design:** Allows trough to be rotated in 30 degree increments for pathway transition from horizontal to vertical.
- **HiLOC ready:** Up to 3 HiLOC harness shells can be snapped into the cable trough providing Zero "U" connectivity for switches and servers.



specifications

General Info

Color: (B)lack or (W)hite
Product Series: Mighty Mo 20
Type: Rack Accessories
Component Type: Cable Trough

Construction Information

Component1: Cable Trough

Dimensions

Depth U S: 5.25

Diameter Metric:

Height Metric: 12.7 mm

Height U S: 0.5"

Length Metric:

Width Metric: 76.2 mm

Width U S: 3"

Height: 0.5"

Buy American Act Compliance

Country of Origin: MEXICO

Buy American Act Status: Trade Agreement Act Compliant