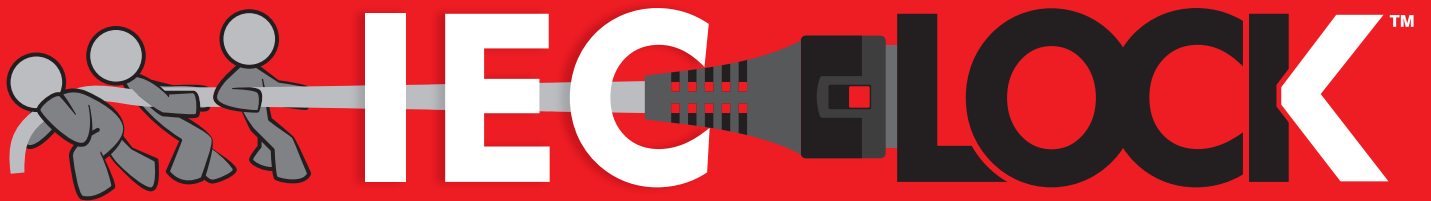
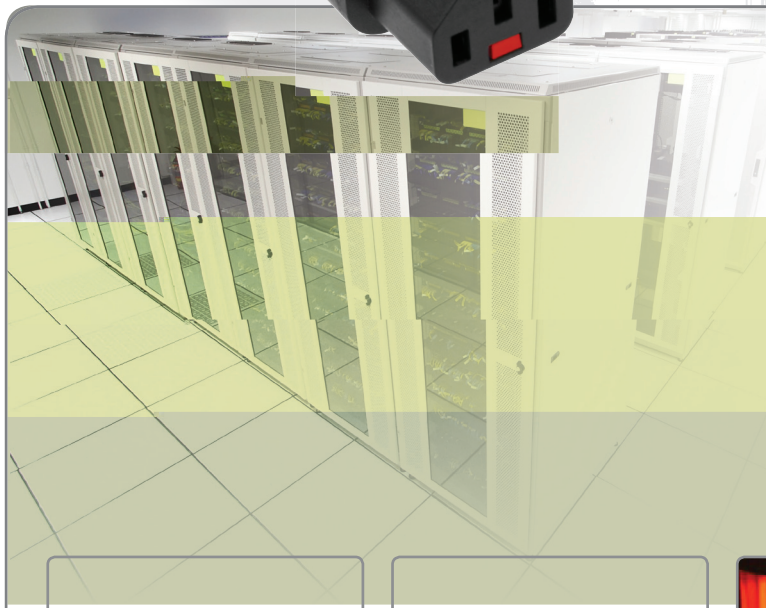


Guards against accidental disconnection of Computers, PDU's, Servers and most Network Devices.

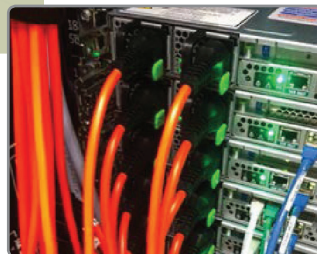


Unique patented lockable female C13 & C19 IEC connectors and outlets



**Suitable for use with
'ANY STANDARD'
C14 or C20 inlet**

- **Protects appliances that are vulnerable to vibration**
- **Connector cannot be accidentally pulled or vibrated out of the inlet**



Connectors and outlets can be used with standard IEC plugs and inlets.

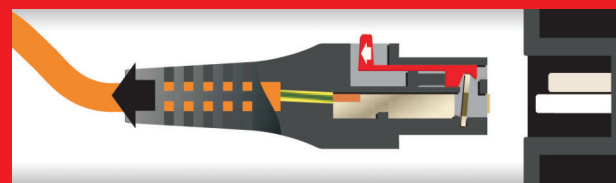
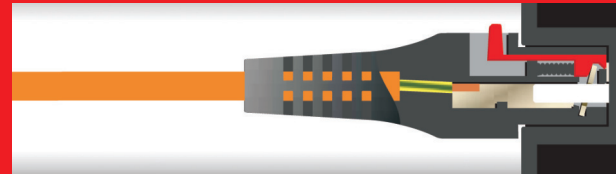
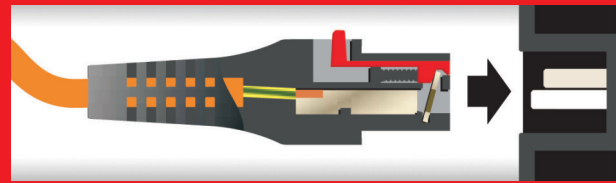
But for extra protection use both to ensure against accidental removal of power cables connected to PDU's, Servers, Network devices etc.



How it works!



- Push the connector into the standard IEC inlet and it is locked in position
- Connector **CANNOT** be accidentally pulled or vibrated out of the inlet
- Slide back the 'red' tab to release and remove connector from inlet



To find out more visit www.ieclock.com

Technical Information

Cable Assemblies (Connector)

- IEC LOCK (C13/C19) to UK Plug
- IEC LOCK (C13/C19) to European Schuko Plug
- IEC LOCK (C13/C19) to (C14/C20) IEC Plug
- IEC LOCK (C13/C19) to NEMA 5-15P (USA)
- IEC LOCK (C13/C19) to Australian 3 Pin Plug
- IEC LOCK (C13/C19) to Swiss & Italian Plug
- IEC LOCK (C13) to Japanese Plug
- IEC LOCK (C13/C19) to Brazilian Plug
- IEC LOCK (C13/C19) to Stripped End

Cable Lengths (Connector)

300mm up to any length. Various cables lengths and assemblies are retained as stock items with further combinations being available for special order. Call our Sales Office for more information.

Patent Information (Connector)

Patents: U.K. Patent No. GB2383202B
International Patent application
No. PCT/GB02/05714

Test Information (Connector)

Test Body: KEMA, UL, c-UL, SAA, KC, PSE
Test Standard: IEC/EN 60320-1

Cable Size (Connector)

C13: 3 x 1.00mm² H05 V V-F / H05RN

C13: 3 x 16 / 18awg SVT / SJT

C13: 3 x 1.25mm² HVCTF

C19: 3 x 1.50mm² H05VV-F,

C19: 3 x 14 awg SVT / SJT

Cable colours available:

Black, Orange, Blue, Red & White

Approvals (Outlet)

10 A/250VAC: ENEC 05, KEMA KEUR

15 A/250VAC: UL

Patent (Outlet)

UK Number: 2463468B **EU Number:** EP2321879A

HK Number: HK1141901 Chinese Patent

Application No: CN 102150330 A



Other worldwide patents pending

Standards (Outlet)

IEC/EN 60320-2-2/FUL498

CSA C22.2 No 182.3-M1987



www.ieclock.com  
Tel: +44 (0)1827 63454 Fax: +44 (0)1827 63362 Email: exportsales@scolmore.com / oemsales@scolmore.com
Scolmore Park, Landsberg, Lichfield Road Industrial Estate, Tamworth, Staffordshire B79 7XB ENGLAND UK