



steel wire cable tray system accessories

Marco Cable Management has further enhanced its reputation, by the continued growth in innovative products and supportive accessories.

Marco has also invested heavily in new state of the art equipment to enhance its position as the largest UK manufacturer of Steel Wire Cable Tray solutions. Additionally, we have also invested in a 25,000 sq ft dedicated distribution site for the Steel Wire Cable Tray range.



steel wire cable tray system accessories



Marco's New Fast Fix Side Coupler (MCSSC)

Marco's Steel Wire Cable Tray accessories include the new Fast Fix Side Coupler, enabling two lengths of Steel Wire Cable Tray to be coupled together and secured within seconds. Therefore reducing installation time on-site whilst meeting and exceeding earth continuity requirements to standard EN 61537.

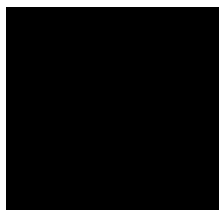
The innovative design allows the Marco Fast Fix Side Coupler to be installed from inside the Steel Wire Cable Tray, allowing for ease of installation within confined areas.

Supplied in packs of 50, the new Fast Fix Side Coupler is made secure with one turn of a screwdriver and can be utilised with both 55mm and 106mm depth side walls.

Made from sprung steel, it has a chromium-free Geomet® finish, and is suitable for both internal and external environments, as well as Data Centre applications.

key features

- Quick and easy to install, saving time on installation
- With one turn of a screw driver, Marco's new Fast Fix Side Coupler is locked into place
- Innovative design allows for installation from inside the Steel Wire Cable Tray, making the coupler ideal for use within confined spaces
- Chromium-free Geomet® finish. Suitable for both internal and external environments, as well as Data Centre applications
- Meets and exceeds EN 61537 standard for electrical continuity
- Designed to fit Marco 55mm depth side walls (up to and including 300mm wide trays) and 106mm depth side walls (100mm to 200mm wide trays only). For all other sizes the MCQC is required.

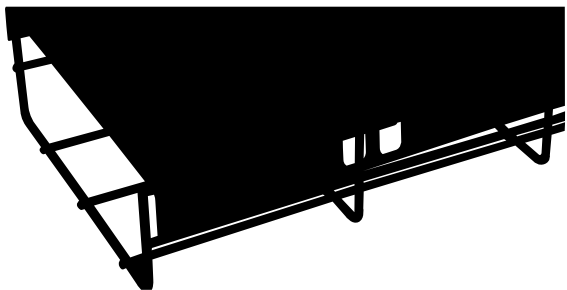


Highly Commended
Innovative Commercial Product of the Year

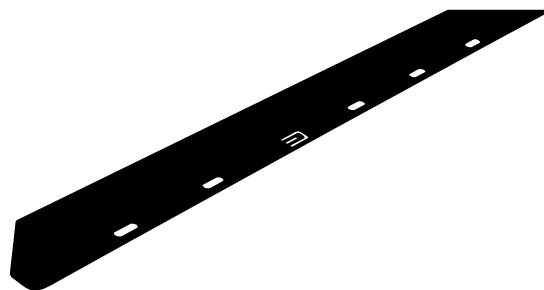




steel wire cable tray system accessories



MCL



MCD



MCSSC



MCQC



MCFUSC



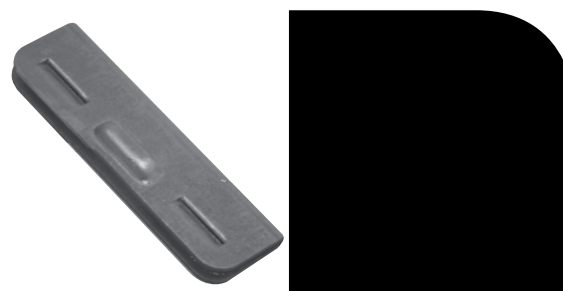
MCQLL



MCQLS



MCDOP



MCDJB

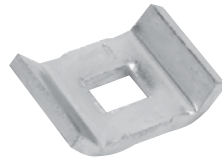




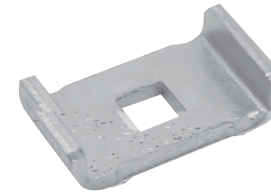
steel wire cable tray system accessories



MCCB



MCCS



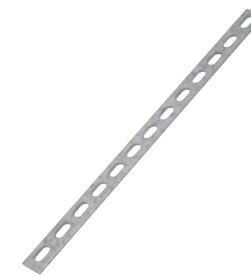
MCCM



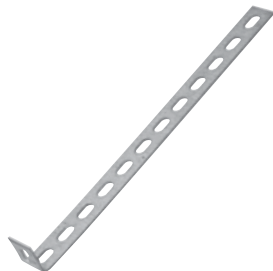
MCM620NW



MCET16



MCSP



MCSP90



max safe working load (kg): 100 will take M6/M8 threaded rod

MCSB68



max safe working load (kg): 100 will take M6/M8 threaded rod

MCSB1012

steel wire cable tray system accessories



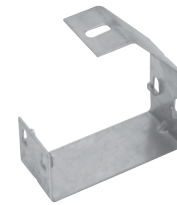
max safe working load (kg): 30

MCBS50



max safe working load (kg): 30

MCBS100



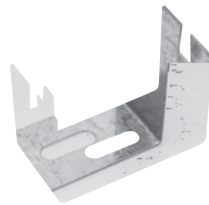
max safe working load (kg): 30

MCBS150

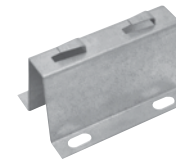


max safe working load (kg): 20

MCB35



MCTS35



max safe working load (kg): 150

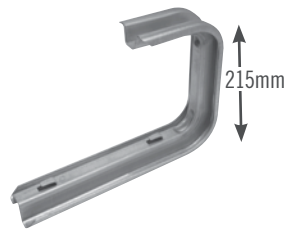
MCFFB



MCCSB RANGE



MCWFB RANGE



MCCFB RANGE



MCCB RANGE



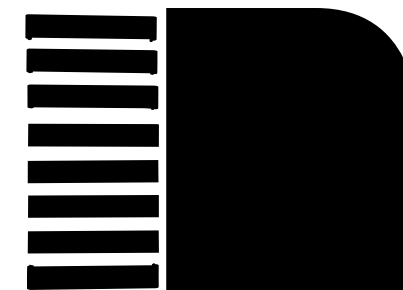
MCWB RANGE



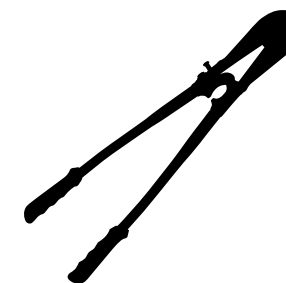
steel wire cable tray system accessories

| CODE | DESCRIPTION | TRAY WIDTH (mm) | FINISH | QTY |
|---------------|---|-----------------|--------|-----|
| MCL100 | Steel Wire Cable Tray lid - 2m long | 100 | PG | 1 |
| MCL150 | Steel Wire Cable Tray lid - 2m long | 150 | PG | 1 |
| MCL200 | Steel Wire Cable Tray lid - 2m long | 200 | PG | 1 |
| MCL300 | Steel Wire Cable Tray lid - 2m long | 300 | PG | 1 |
| MCL400 | Steel Wire Cable Tray lid - 2m long | 400 | PG | 1 |
| MCL450 | Steel Wire Cable Tray lid - 2m long | 450 | PG | 1 |
| MCL500 | Steel Wire Cable Tray lid - 2m long | 500 | PG | 1 |
| MCL600 | Steel Wire Cable Tray lid - 2m long | 600 | PG | 1 |
| CODE | DESCRIPTION | SIZE (mm x m) | FINISH | QTY |
| MCD30 | Steel Wire Cable Tray divider | 30 x 3 | PG | 1 |
| MCD55 | Steel Wire Cable Tray divider | 55 x 3 | PG | 1 |
| MCD106 | Steel Wire Cable Tray divider | 106 x 3 | PG | 1 |
| CODE | DESCRIPTION | SIZE (mm x m) | FINISH | QTY |
| MCSSC | Fast fix side coupler (to fit MC5550 - MC55300) | NA | GT | 50 |
| MCQC | Quick coupler (each bag supplied with tool. Also available separately upon request) | NA | EZ GT | 50 |
| MCFUSC | Fast fix universal strut clip | NA | GT | 50 |
| MCQLS | Quick lock small (for trays from 100mm to 200mm) | NA | EZ | 25 |
| MCQLL | Quick lock large (for trays from 300mm to 600mm) | NA | EZ | 25 |
| MCDOP | Drop out plate | NA | PG | 1 |
| MCDJB | Divider joining bracket | NA | EZ | 50 |

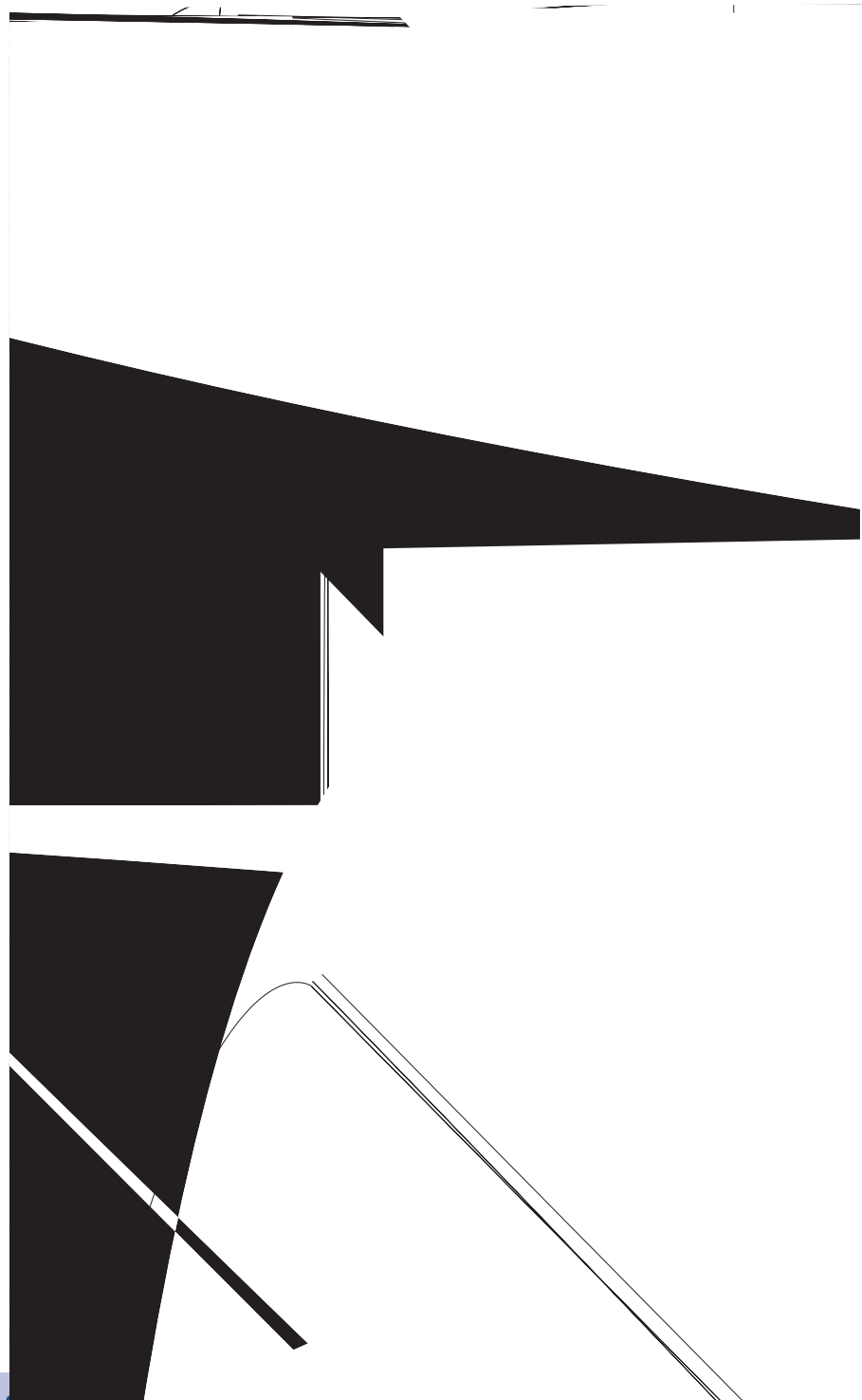
| CODE | DESCRIPTION | FINISH | QTY |
|-----------------|---|---------|-----|
| MCCL | Clamp large - hole diameter 6.5mm | EZ GT | 50 |
| MCSSH | Suspension hanger - hole diameter 10.2mm | EZ GT | 25 |
| MCFCP | Flexible conduit plate (not suitable for 75mm deep range) | EZ GT | 1 |
| MCFCP3 | Flexible conduit plate 32mm | PG | 1 |
| MCQFR | Quick fix riser | EZ | 1 |
| MCAMP | Wall bracket/ACC mounting plate | PG | 1 |
| MCMFP | Multi fix plate | PG | 1 |
| MCUSB | Universal support bracket | PG | 1 |
| MCCA | Nut, bolt and clamp assembly | EZ GT | 50 |
| MCCB | Nut, bolt and clamp assembly | EZ GT | 50 |
| MCCS | Clamp small | EZ GT | 100 |
| MCCM | Clamp medium | EZ GT | 100 |
| MCM620NW | M6 x 20 screw, nut and washer | EZ GT | 100 |
| MCET16 | Earth terminal | COPPER | 10 |
| MCSP | Splice plate | PG GT | 10 |
| MCSP90 | Splice plate with 90 degree bend | PG GT | 10 |
| MCSB68 | Suspension bracket for 6 and 8mm threaded rod | EZ / PG | 2 |
| MCSB1012 | Suspension bracket for 10 and 12mm threaded rod | EZ / PG | 2 |
| MCSB50 | Suspension bracket for MC3050 and MC5550 | PG | 1 |
| MCSB100 | Suspension bracket for MC30100 and MC55100 | PG | 1 |
| MCSB150 | Suspension bracket for MC30150 and MC55150 | PG | 1 |
| MCB35 | Bracket for MC3050 and MC5550 | PG | 1 |
| MCTS35 | Tray support bracket for MC3050 and MC5550 | PG | 1 |
| MCFFB | Fast fix floor bracket | PG | 10 |
| MCTAG | Available in various colours | uPVC | 50 |
| MCROP | Wire cutters | NA | 1 |



MCTAG



MCROP







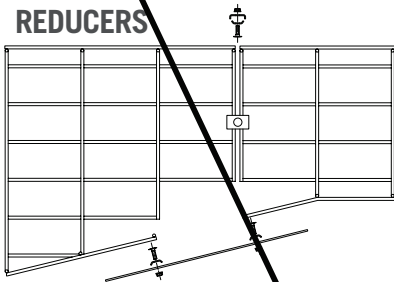
steel wire cable tray system fabrication guide



Available in Electro-Zinc, Pre-Galvanised, Powder-Coated, Hot-Dip Galvanised and Electro-Zinc Plus. Marco Steel Wire Cable Tray is offered in three depths - 30mm, 55mm and 106mm*. A wide range of fittings is available to join and support the Steel Wire Cable Tray.

The following section is intended to be used as a guide to fabricating Steel Wire Cable Tray fittings on-site.

REDUCERS

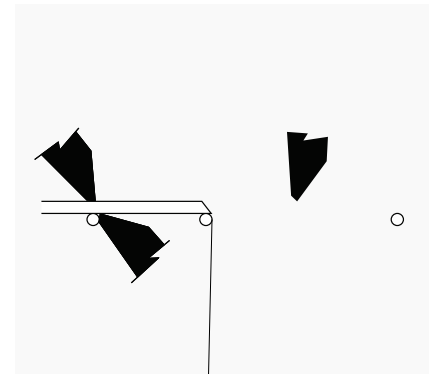


Example of MC55300 / MC55200
MCCA x 3 or MCCB x 2 plus MCSF x 50mm



TYPICAL FABRICATED REDUCER COMPONENTS

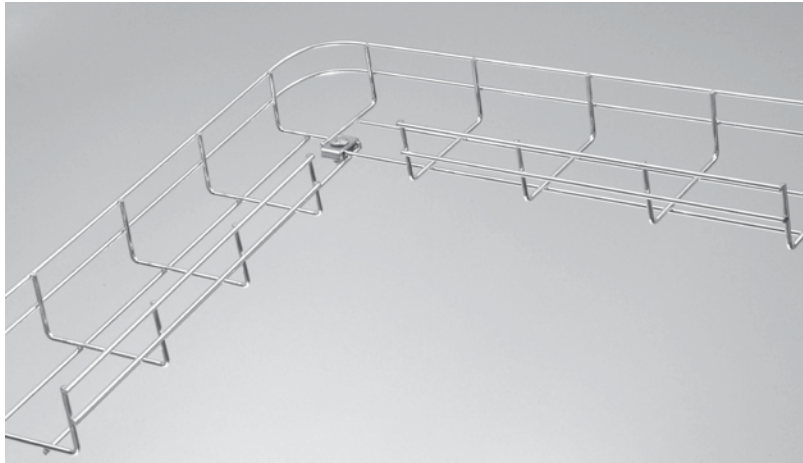
| | | |
|--|--|----|
| MCCA | | x2 |
| MCCA | | x2 |
| MCSF | | x1 |
| All bends can be easily fabricated on-site | | |

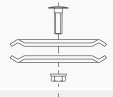
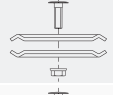
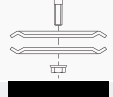





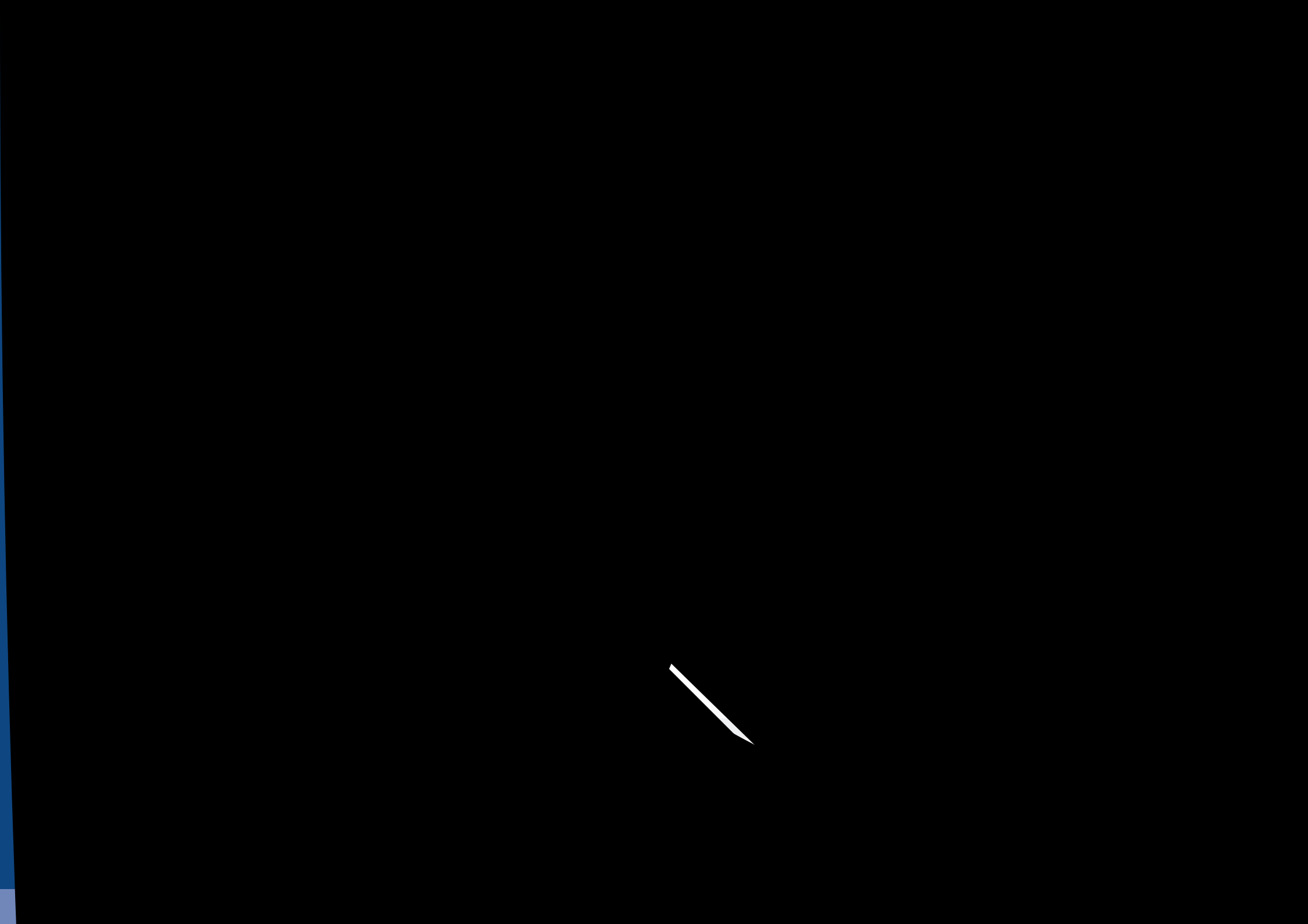


steel wire cable tray system fabrication guide - small radius bend



| TRAY WIDTH (mm) | FASTENING TYPE | MCNW620 MCCL x2 | MCCA | REMOVED SEGMENTS A | REMOVED SEGMENTS B |
|-----------------|--------------------------|--|------|--------------------|--------------------|
| 50 | MCCA | | x1 | 1 | - |
| 100 | MCCA | | x1 | 1 | 1 |
| 150 | MCCL x 2 MCM620NW x 1 |  x1 | | 1 | 2 |
| 200 | MCCL x 2 MCM620NW x 1 |  x1 | | 1 | 2 |
| 300 | MCCL x 2 MCM620NW x 1 |  x1 | | 2 | 2 |
| 400 | MCCL x 2 MCM620NW x 1 |  x1 | | 2 | 4 |
| 450 | MCCL x 2 MCM620NW x 1 | | x1 | 2 | 4 |
| 500 | MCCA x 9 | | x1 | 2 | 5 |
| 600 | MCCA x 11 | | x1 | 2 | 6 |







steel wire cable tray system cable capacities

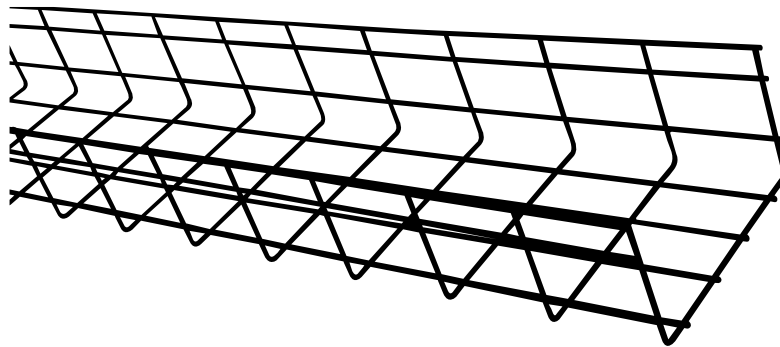
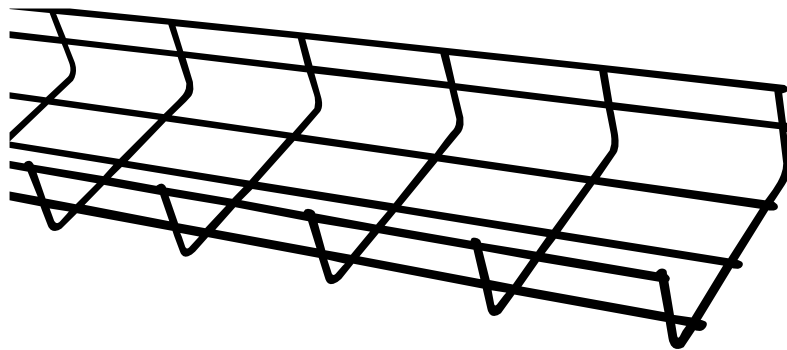
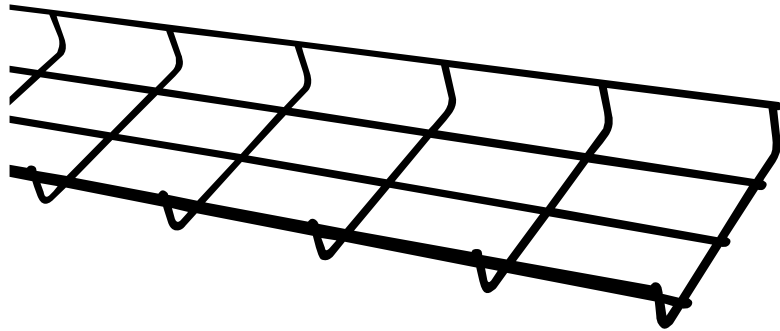


TABLE SHOWING APPROXIMATE CABLE CAPACITIES OF ALL STEEL WIRE CABLE TRAYS USING A 50% FILL RATIO

| MC30 | | | APPROX CABLE CAPACITY UNDER NEC 50% RULE | | |
|------------|------------------------------------|--|--|-----------------------------|------------------------------|
| CABLE TRAY | TOTAL FILL AREA (mm ²) | NEC 50% RULE: ALLOWABLE FILL AREA (mm ²) | CAT 5e 4-pr UTP (4.9mm diam) | CAT 6 4-pr UTP (6.5mm diam) | CAT 6a 4-pr UTP (8.9mm diam) |
| MC3050 | 1400 | 700 | 37 | 21 | 11 |
| MC30100 | 2800 | 1400 | 74 | 42 | 23 |
| MC30150 | 4200 | 2100 | 111 | 63 | 34 |
| MC30200 | 5600 | 2800 | 148 | 84 | 45 |
| MC30300 | 8400 | 4200 | 223 | 127 | 68 |

| MC55 | | | APPROX CABLE CAPACITY UNDER NEC 50% RULE | | |
|------------|------------------------------------|--|--|-----------------------------|------------------------------|
| CABLE TRAY | TOTAL FILL AREA (mm ²) | NEC 50% RULE: ALLOWABLE FILL AREA (mm ²) | CAT 5e 4-pr UTP (4.9mm diam) | CAT 6 4-pr UTP (6.5mm diam) | CAT 6a 4-pr UTP (8.9mm diam) |
| MC5550 | 2600 | 1300 | 69 | 39 | 21 |
| MC55100 | 5200 | 2600 | 138 | 78 | 42 |
| MC55150 | 7800 | 3900 | 207 | 118 | 63 |
| MC55200 | 10400 | 5200 | 276 | 157 | 84 |
| MC55300 | 15600 | 7800 | 414 | 235 | 125 |
| MC55400 | 20800 | 10400 | 552 | 313 | 167 |
| MC55450 | 23400 | 11700 | 620 | 353 | 188 |
| MC55500 | 26000 | 13000 | 689 | 392 | 209 |
| MC55600 | 31200 | 15599.95 | 827 | 470 | 251 |

| MC106 | | | APPROX CABLE CAPACITY UNDER NEC 50% RULE | | |
|------------|------------------------------------|--|--|-----------------------------|------------------------------|
| CABLE TRAY | TOTAL FILL AREA (mm ²) | NEC 50% RULE: ALLOWABLE FILL AREA (mm ²) | CAT 5e 4-pr UTP (4.9mm diam) | CAT 6 4-pr UTP (6.5mm diam) | CAT 6a 4-pr UTP (8.9mm diam) |
| MC106100 | 10303 | 5152 | 273 | 155 | 83 |
| MC106150 | 15452 | 7726 | 410 | 233 | 124 |
| MC106200 | 20600 | 10300 | 546 | 310 | 166 |
| MC106300 | 30903 | 15452 | 819 | 466 | 248 |
| MC106400 | 41200 | 20600 | 1092 | 621 | 331 |
| MC106450 | 46348 | 23174 | 1229 | 698 | 373 |
| MC106500 | 51503 | 25752 | 1366 | 776 | 414 |
| MC106600 | 617800 | 30900 | 1639 | 931 | 497 |