



Datacom Connectivity



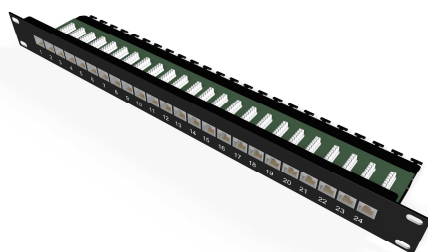
1U 24port Cat6 UTP 90° Punch down Panel with Rear Management

Issue date: 10-10-29

Supersedes: -



Value Innovation is a way of looking at the world. By combining market insight with technological know-how and building strong, long-lasting relationships, we add value to your business with advanced communication solutions and services that are designed to last. No matter how complex your challenge, we have a product or solution that will do more than meet your needs. New applications, breakthrough cables or complete network designs - it's all part of what we call Value Innovation, and it's what drives us.



Cat6 Unshielded 24-Port Patch Panel

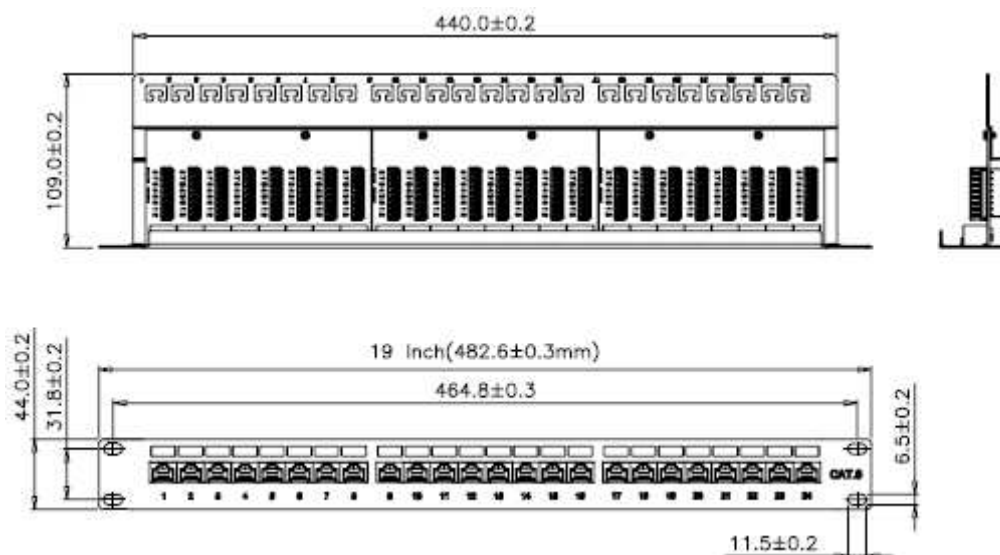
- Cat6 compliant performance
- 90° termination blocks for easy termination
- Compatible with 110 & Krone Punch Tools
- Built in cable management
- Available in Black and Gray
- Lasermark label available on request

Specification

Item	Description
RJ45 Plastic housing	ABS + PC
RJ45 jack contact material and finish	Phosphor Bronze
	Contact area : Min 3 mm 50 micro-inch Gold plated over Nickel colour
IDC terminal and finish	Phosphor Bronze with min, 50 micro-inch Tin plated
Wire size compatibility	23-26 AWG solid wire
Dimensions	482 x 44 x 109

Performance

IDC cap colour code supports both wiring schemes TIA 568A & 568B	
Insertion force	900 gm for 8 contacts
Retention strength	7.7kg between jack and plug
Operating temperature	-10°C to 60°C
Durability	Jack 750 cycles


Technical data

Material code	SAP Descriptions	Designation	Size	Weight	Items per packaging unit
1021291	UC C400 PP TR U BK 24 1U	1U 24port Cat6 UTP Panel	482 x 44 x 109	975 g	1 or 20 g

Related Products

Material code	SAP Descriptions	Designation	Size	Weight	Items per packaging unit
---------------	------------------	-------------	------	--------	--------------------------